

Pick me

HAZY

The Handmade Art Paint

織 雲 紗

Pick Me  
Paint

一筆一光影  
輕織空間柔美詩意

# 織雲 紗

/ Hazy

一筆一光影，輕織空間柔美詩意  
織雲紗以簡易施工創造絲滑柔和的牆面  
讓家居或商業空間散發低調奢華



# 織雲紗

## 關於產品 / About the product

織雲紗具有專業品質,是一種耐用、耐磨損,具有天然珠光的環保塗料,它擁有雙層結構.彈性柔光工藝。

Hazy is a durable, wear-resistant, environmentally friendly coating with a natural pearlized finish, which has a two-layer structure. It has a double-layer structure.

## 適用範圍 / Scope of Application

特別適合兒童房、遊戲間等小孩或寵物經常使用的空間  
適用於低人流區域, 室內牆壁和天花板的理想選擇

Ideal for children's rooms, playrooms and other spaces frequented by children or pets  
Ideal for low-traffic areas, interior walls and ceilings

## 參考用量 / Reference Dosage

刷塗 : 4-5m<sup>2</sup>/kg

Brush: 4-5m<sup>2</sup>/kg

## 產品淨重 / Net Weight

2.5kg/桶/barrel

## 配套工具 / Companion Tools

羊毛滾筒/毛刷

Wool Roller/Brush



### 輕鬆施工

Easy construction

滾塗或海绵即可  
簡單易上手, 效果專業

Roll coating or sponge is sufficient  
Simple and easy to learn, with professional effects



### 絲滑質感

Silky texture

如絲綢般柔滑細膩  
提升空間質感

Silky smooth and delicate, enhancing the quality of space.



### 柔和光澤

Soft Gloss

珍珠光澤自然不刺眼  
營造舒適氛圍

The pearl luster is natural and non-glaring, creating a cozy atmosphere.



### 特殊配方

special formula

應用「IPS新型聚合體合成工藝」, 具創新性除菌效果, 無毒無害, 施工後即可安心入住

Innovative anti-bacterial effect, non-toxic and non-harmful, ready-to-paint and ready-to-use

## 施工工藝 / Construction Process



### 01. / 第一步

使用同色抗鹼細砂底漆,滾塗兩遍(掃刷型加水量為20-25%,海綿型在30-35%以內)

Use the same color Shen pulp sand primer, roller coating two times (sweeping type adding water amount is 20-25%, point and shoot type within 30-35%)



### 02. / 第二步

主材經調色,稀釋後,攪拌均勻

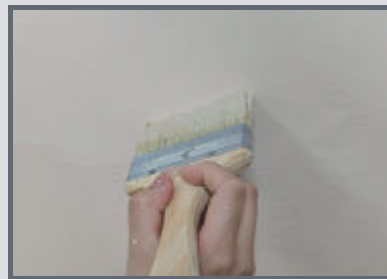
The main ingredient is colored, diluted, and mixed well.



### 03. / 第三步

使用羊毛滾筒滾塗一遍織雲紗主材

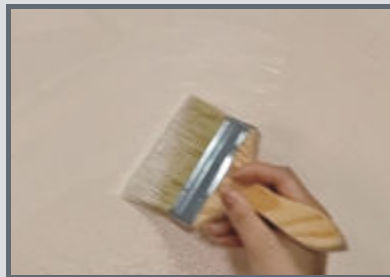
Apply one coat of Hazy with a wool roller.



### 04. / 第四步

掃刷型:在未乾前用毛刷以「8」字手法不規則刷出紋理  
海綿型:未乾燥時用海綿進行表面點拍

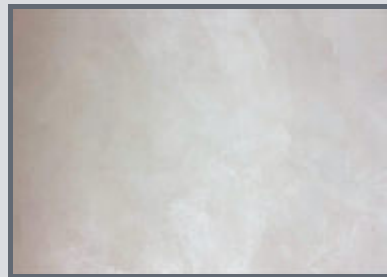
Sweep brush type: Use a brush to irregularly brush the texture with the "8" character before drying  
Sponge type: Use a line tapping device to spot the surface before drying



### 05. / 第五步

相隔2-4小時第一道施工乾燥後,重復施工

Repeat after the first coat dries 2-4 hours apart.



### 06. / 第六步

產品最終完成效果

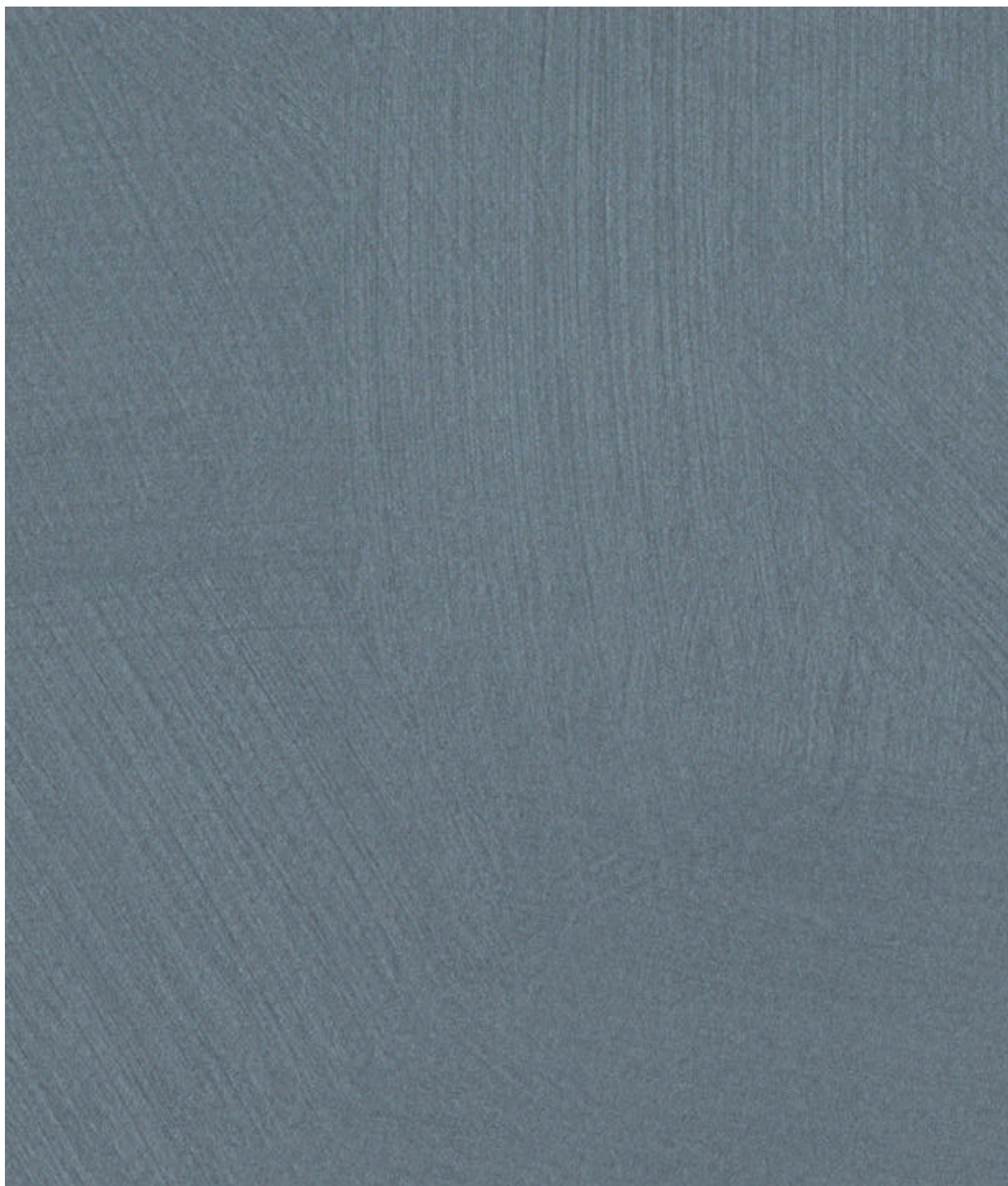
The finalized effect of the product.

# 織雲紗

/ Hazy

一筆一光影,輕織空間柔美詩意  
織雲紗以簡易施工創造絲滑柔和的牆面  
讓家居或商業空間散發低調奢華

# 織雲紗



S底 + M104 (50g)

ZY - M104 (25g)

刷塗 / Brush





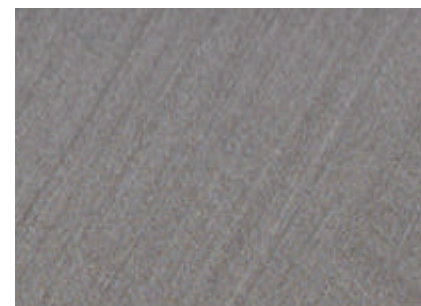
S底 + M40 (10g)      ZY - M40 (5g)



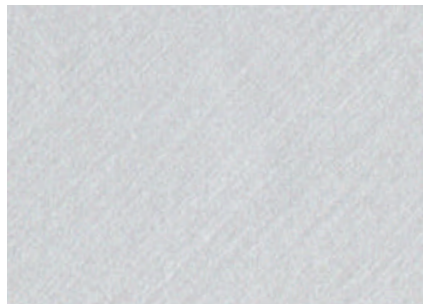
S底 + M40 (50g)      ZY - M40 (25g)



S底 + M40 (100g)      ZY - M40 (50g)



S底 + M40 (200g)      ZY - M40 (100g)



S底 + M80 (10g)      ZY - M80 (5g)



S底 + M80 (50g)      ZY - M80 (25g)



S底 + M80 (100g)      ZY - M80 (50g)



S底 + M80 (200g)      ZY - M80 (100g)



S底 + M83 (10g)      ZY - M83 (5g)



S底 + M83 (50g)      ZY - M83 (25g)



S底 + M83 (100g)      ZY - M83 (50g)



S底 + M83 (200g)      ZY - M83 (100g)



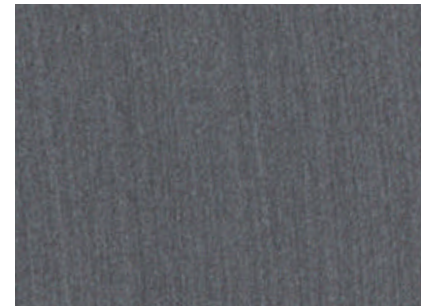
S底 + M89 (10g)      ZY - M89 (5g)



S底 + M89 (50g)      ZY - M89 (25g)



S底 + M89 (100g)      ZY - M89 (50g)



S底 + M89 (200g)      ZY - M89 (100g)



S底 + M103 (10g)      ZY - M103 (5g)



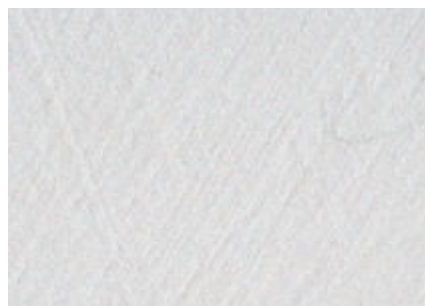
S底 + M103 (50g)      ZY - M103 (25g)



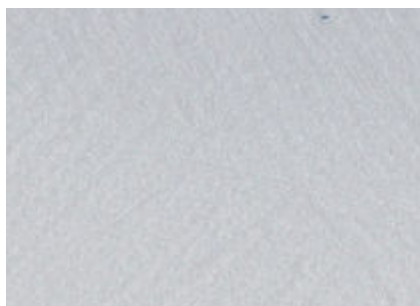
S底 + M103 (100g)      ZY - M103 (50g)



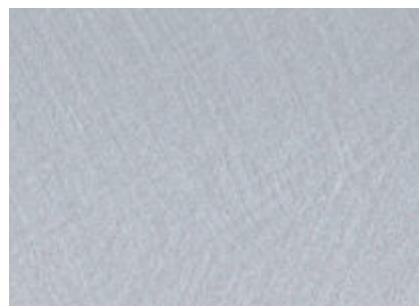
S底 + M103 (200g)      ZY - M103 (100g)



S底+M77 (10g) ZY - M77 (5g)



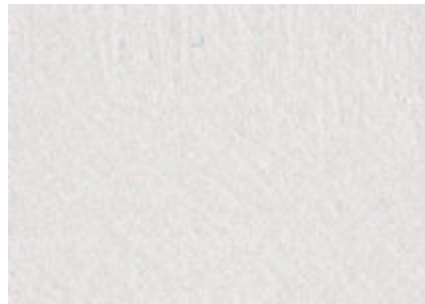
S底+M77 (50g) ZY - M77 (25g)



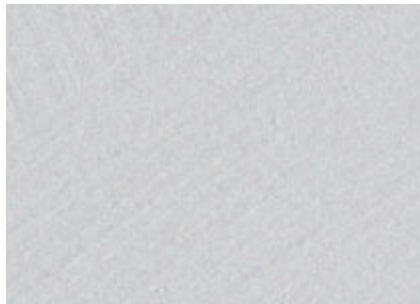
S底+M77 (100g) ZY - M77 (50g)



S底+M77 (200g) ZY - M77 (100g)



S底+M74 (10g) ZY - M74 (5g)



S底+M74 (50g) ZY - M74 (25g)



S底+M74 (100g) ZY - M74 (50g)



S底+M74 (200g) ZY - M74(100g)



S底+M16 (10g) ZY - M16 (5g)



S底+M16 (50g) ZY - M16 (25g)



S底+M16 (100g) ZY - M16 (50g)



S底+M16 (200g) ZY - M16 (100g)



S底+M66 (10g) ZY - M66 (5g)



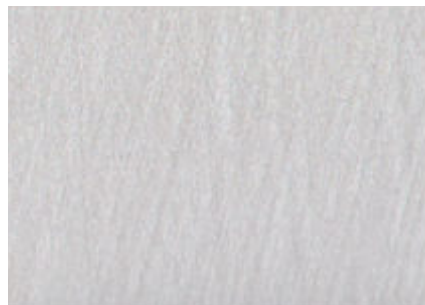
S底+M66 (50g) ZY - M66 (25g)



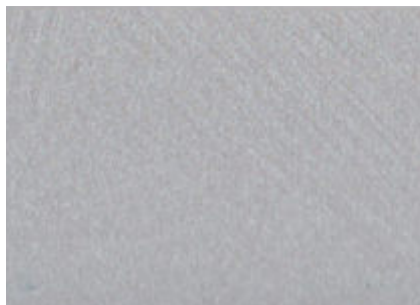
S底+M66 (100g) ZY - M66 (50g)



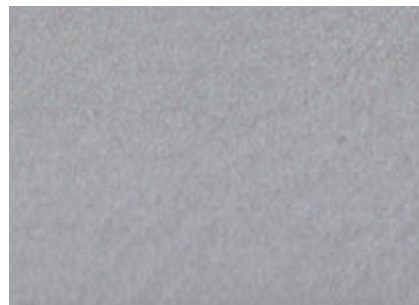
S底+M66 (200g) ZY - M66 (100g)



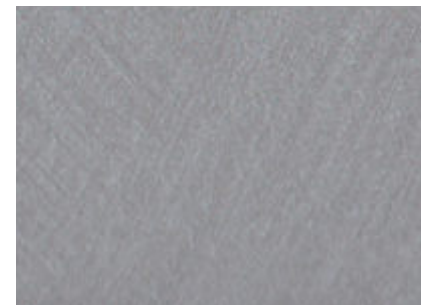
S底+M72 (10g) ZY - M72 (5g)



S底+M72 (50g) ZY - M72 (25g)



S底+M72 (100g) ZY - M72 (50g)



S底+M72 (200g) ZY - M72 (100g)



S底 + M05 (10g)      ZY - M05 (5g)



S底 + M05 (50g)      ZY - M05 (25g)



S底 + M05 (100g)      ZY - M05 (50g)



S底 + M05 (200g)      ZY - M05 (100g)



S底 + M07 (10g)      ZY - M07 (5g)



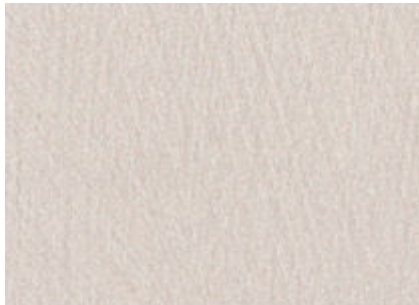
S底 + M07 (50g)      ZY - M07 (25g)



S底 + M07 (100g)      ZY - M07 (50g)



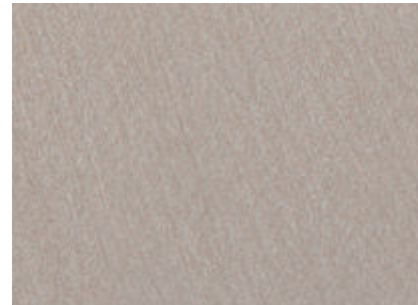
S底 + M07 (200g)      ZY - M07 (100g)



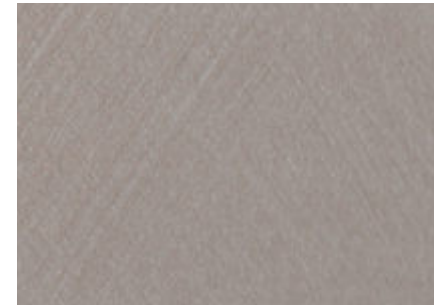
S底 + M29 (10g)      ZY - M29 (5g)



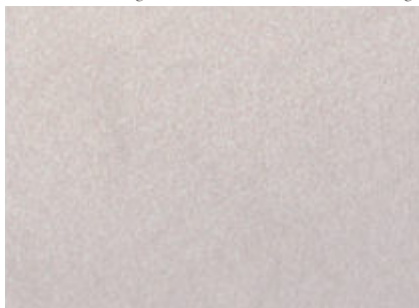
S底 + M29 (50g)      ZY - M29 (25g)



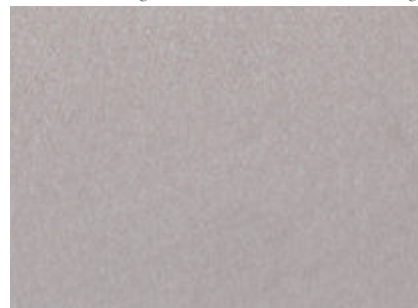
S底 + M29 (100g)      ZY - M29 (50g)



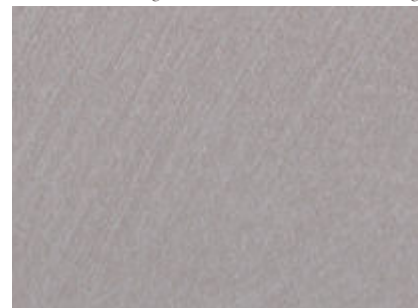
S底 + M29 (200g)      ZY - M29 (100g)



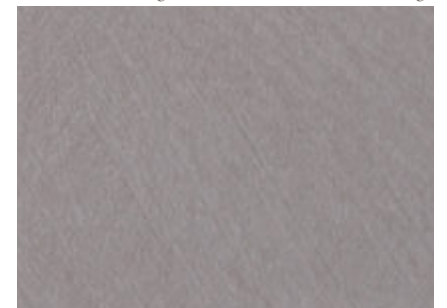
S底 + M107 (10g)      ZY - M107 (5g)



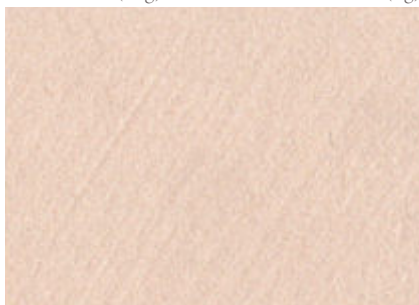
S底 + M107 (50g)      ZY - M107 (25g)



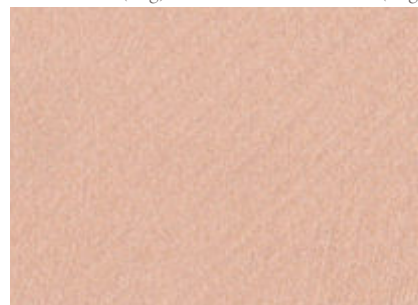
S底 + M107 (100g)      ZY - M107 (50g)



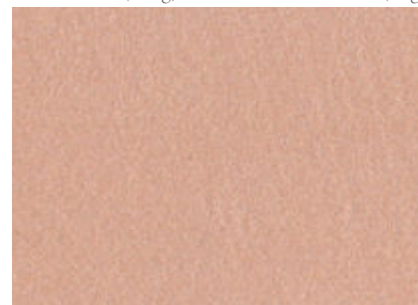
S底 + M107 (200g)      ZY - M107 (100g)



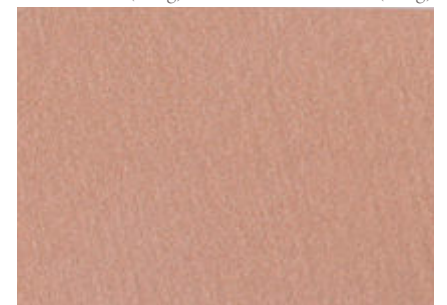
S底 + M97 (10g)      ZY - M97 (5g)



S底 + M97 (50g)      ZY - M97 (25g)



S底 + M97 (100g)      ZY - M97 (50g)



S底 + M97 (200g)      ZY - M97 (100g)



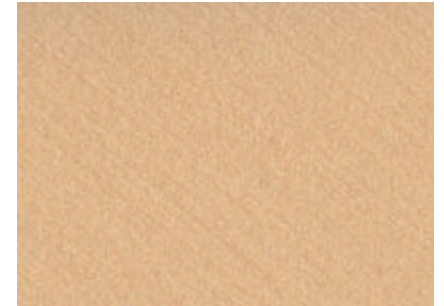
S底+M36 (10g) ZY - M36 (5g)



S底+M36 (50g) ZY - M36 (25g)



S底+M36 (100g) ZY - M36 (50g)



S底+M36 (200g) ZY - M36 (100g)



S底+M96 (10g) ZY - M96 (5g)



S底+M96 (50g) ZY - M96 (25g)



S底+M96 (100g) ZY - M96 (50g)



S底+M96 (200g) ZY - M96 (100g)



S底+M75 (10g) ZY - M75 (5g)



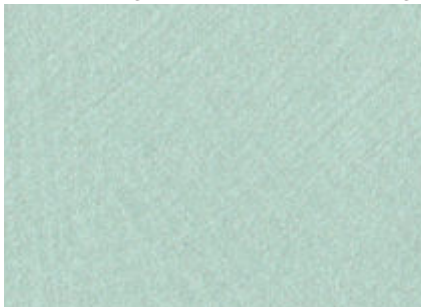
S底+M75 (50g) ZY - M75 (25g)



S底+M75 (100g) ZY - M75 (50g)



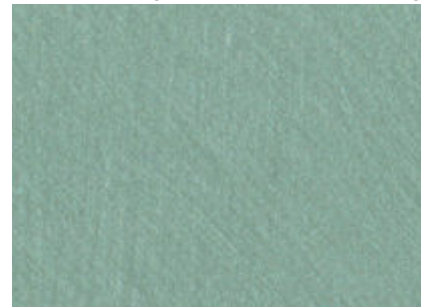
S底+M75 (200g) ZY - M75 (100g)



S底+M112 (10g) ZY - M112 (5g)



S底+M112 (50g) ZY - M112 (25g)



S底+M112 (100g) ZY - M112 (50g)



S底+M112 (200g) ZY - M112 (100g)



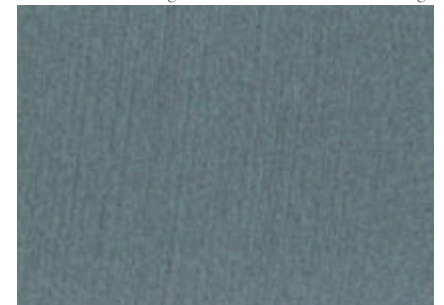
S底+6231 (10g) ZY - 6231 (5g)



S底+6231 (50g) ZY - 6231 (25g)



S底+6231 (100g) ZY - 6231 (50g)



S底+6231 (200g) ZY - 6231 (100g)



S底+M42 (10g)      ZY - M42 (5g)



S底+M42 (50g)      ZY - M42 (25g)



S底+M42 (100g)      ZY - M42 (50g)



S底+M42 (200g)      ZY - M42 (100g)



S底+M81 (10g)      ZY - M81 (5g)



S底+M81 (50g)      ZY - M81 (25g)



S底+M81 (100g)      ZY - M81 (50g)



S底+M81 (200g)      ZY - M81 (100g)



S底+M51 (10g)      ZY - M51 (5g)



S底+M51 (50g)      ZY - M51 (25g)



S底+M51 (100g)      ZY - M51 (50g)



S底+M51 (200g)      ZY - M51 (100g)



S底+M23 (10g)      ZY - M23 (5g)



S底+M23 (50g)      ZY - M23 (25g)



S底+M23 (100g)      ZY - M23 (50g)



S底+M23 (200g)      ZY - M23 (100g)



S底+M104 (10g)      ZY - M104 (5g)



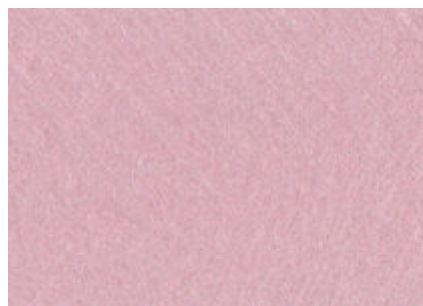
S底+M104 (50g)      ZY - M104 (25g)



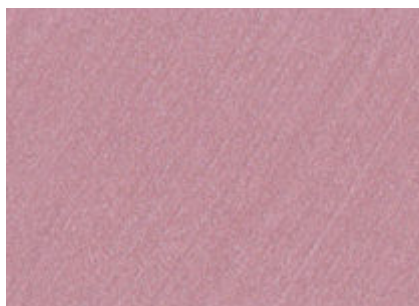
S底+M104 (100g)      ZY - M104 (50g)



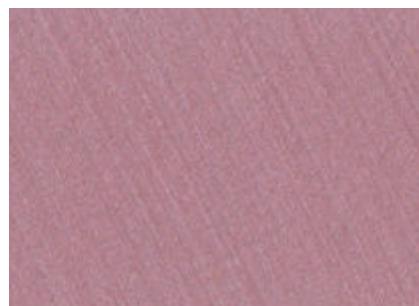
S底+M104 (200g)      ZY - M104 (100g)



S底+M100 (10g) ZY-M100 (5g)



S底+M100 (50g) ZY-M100 (25g)



S底+M100 (100g) ZY-M100 (50g)



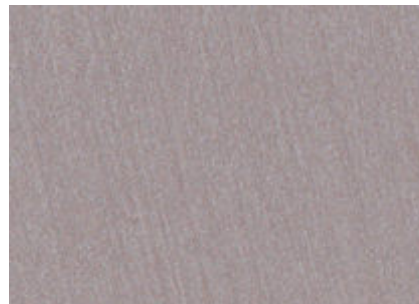
S底+M100 (200g) ZY-M100 (100g)



S底+M50 (10g) ZY-M50 (5g)



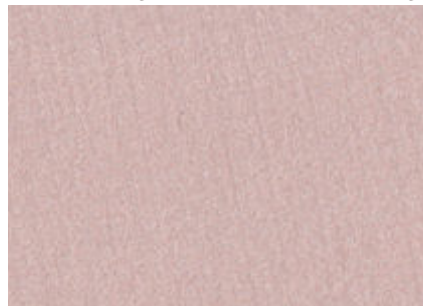
S底+M50 (50g) ZY-M50 (25g)



S底+M50 (100g) ZY-M50 (50g)



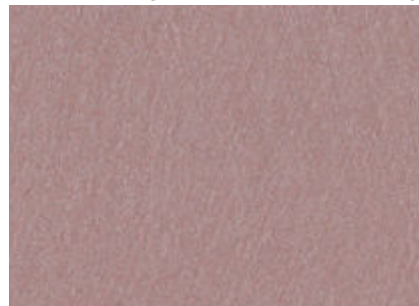
S底+M50 (200g) ZY-M50 (100g)



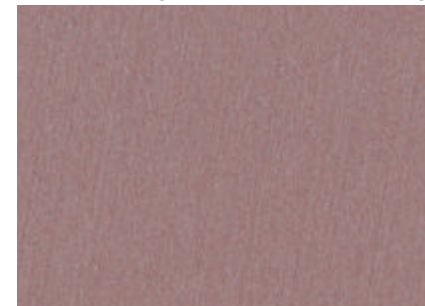
S底+M87 (10g) ZY-M87 (5g)



S底+M87 (50g) ZY-M87 (25g)



S底+M87 (100g) ZY-M87 (50g)



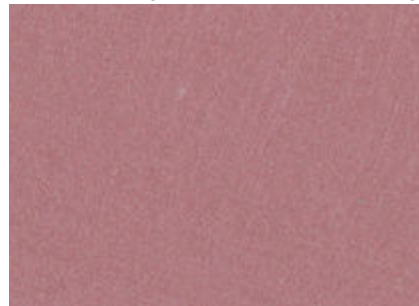
S底+M87 (200g) ZY-M87 (100g)



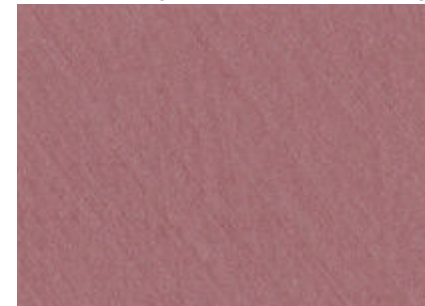
S底+6226 (10g) ZY-6226 (5g)



S底+6226 (50g) ZY-6226 (25g)



S底+6226 (100g) ZY-6226 (50g)



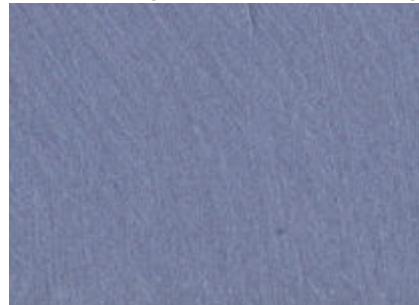
S底+6226 (200g) ZY-6226 (100g)



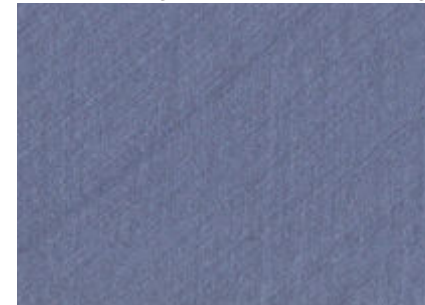
S底+6227 (10g) ZY-6227 (5g)



S底+6227 (50g) ZY-6227 (25g)



S底+6227 (100g) ZY-6227 (50g)



S底+6227 (200g) ZY-6227 (100g)



Artpainting

|

Tonality

|

Style

Pickme Art Coating Co.,Ltd