

Pick me

STARDUST

The Handmade Art Paint

星 雲 紗

Pick Me
Paint

讓牆面如星雲般
散發迷人的光彩

星雲 紗

/ Stardust

讓牆面如星雲般
散發迷人的光彩



星雲紗

關於產品 / About the product

星雲紗是一種室內裝飾塗層,由丙烯酸樹脂與絨毛混製而成。實現創新的色彩和觸覺感官,符合室內裝飾最前沿的趨勢,保持高品質的居室環境。

Nebula Yarn is a decorative interior coating made of acrylic emulsion mixed with lint. It realizes innovative colors and tactile sensations, conforms to the latest trends in interior decoration, and maintains a high-quality living environment.

產品淨重 / Net Weight

2.5kg/桶/barrel

適用範圍 / Scope of Application

僅限室內,牆面裝飾使用,表面施作時避免接觸水份。兒童房空間的室內牆面,內部客廳牆面等空間,或商業空間亦可

For indoor and wall decorations only, avoid contact with water when applying the surface. Interior wall of children's room, interior living room wall, or commercial space.

配套工具 / Companion Tools

羊毛滾筒/打磨器/塑膠批刀

Wool Roller/Polish/Plastic Batch Knife

參考用量 / Reference Dosage

批塗 : 2.5-3m²/kg

Paint: 2.5-3m²/kg



細膩金屬質感
Metallic texture

如星雲般霧面金屬效果
柔滑低調奢華

Nebula-like matte metallic effect
Smooth understated luxury



珍珠光澤
Pearl luster

柔和珍珠光澤
提升空間藝術性

Soften the pearl luster
Enhances the artistry of the space



特殊窯燒技術
Special kiln technology

高硬度
抗刮性能優越

High hardness
Excellent scratch resistance



環保技術
Environmental Technology

IPS聚合物工藝
無毒即住

IPS Polymer Technology
Non-toxic and ready to use



抗UV性能
UV resistance

顏色穩定
長久如新

Stable color
Long-lasting

施工工藝 / Construction Process



01. / 第一步

使用同色抗鹼細砂底漆,滾塗兩遍(加水量為 20-25%)

Use the same color alkali resistant fine sand primer, roll coat twice (with a water addition of 20-25%)



02. / 第二步

主材經調色校準後,攪拌均勻後使用批刀滿批上牆不均勻回收多餘材料

After calibrating the color of the main material, mix it well and then use the batch knife to full batch the uneven recycling of the excess material on the wall.



03. / 第三步

乾透後再次平批上料,薄批不能過厚,用打磨器轉圈打磨,在半乾時進行一次收壓,待預乾時進行紋理定型

After drying, thinly batch, sand in a circular motion with a sander, and then pressurize once when half-dry, and then texturize when pre-dry.



04. / 第四步

產品最終完成效果

The finalized effect of the product.

星雲 紗

/ Stardust

讓牆面如星雲般
散發迷人的光彩

星雲紗

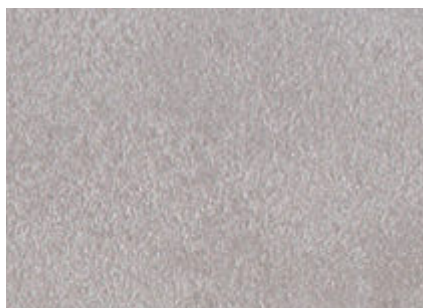


S底 + M74 (50g)

XY - M74 (25g)

批塗 / Paint





S底+M40 (10g) XY - M40 (5g)



S底+M40 (50g) XY - M40 (25g)



S底+M40 (100g) XY - M40 (50g)



S底+M40 (200g) XY - M40 (100g)



S底+M80 (10g) XY - M80 (5g)



S底+M80 (50g) XY - M80 (25g)



S底+M80 (100g) XY - M80 (50g)



S底+M80 (200g) XY - M80 (100g)



S底+M83 (10g) XY - M83 (5g)



S底+M83 (50g) XY - M83 (25g)



S底+M83 (100g) XY - M83 (50g)



S底+M83 (200g) XY - M83 (100g)



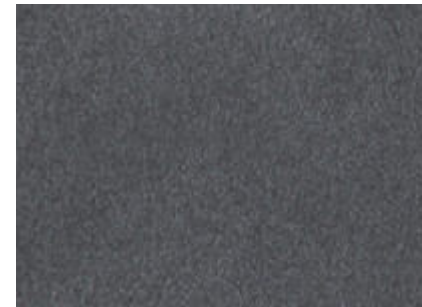
S底+M89 (10g) XY - M89 (5g)



S底+M89 (50g) XY - M89 (25g)



S底+M89 (100g) XY - M89 (50g)



S底+M89 (200g) XY - M89 (100g)



S底+M103 (10g) XY - M103 (5g)



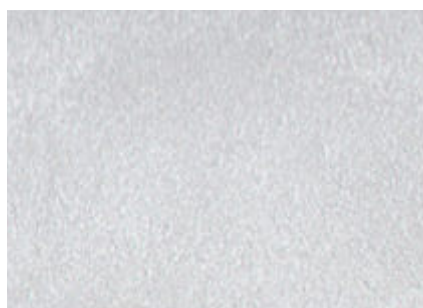
S底+M103 (50g) XY - M103 (25g)



S底+M103 (100g) XY - M103 (50g)



S底+M103 (200g) XY - M103 (100g)



S底+M77 (10g) XY - M77 (5g)



S底+M77 (50g) XY - M77 (25g)



S底+M77 (100g) XY - M77 (50g)



S底+M77 (200g) XY - M77 (100g)



S底+M74 (10g) XY - M74 (5g)



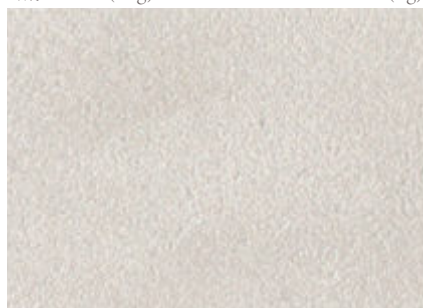
S底+M74 (50g) XY - M74 (25g)



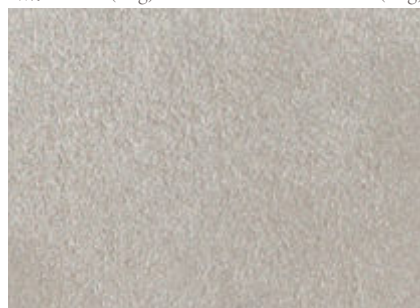
S底+M74 (100g) XY - M74 (50g)



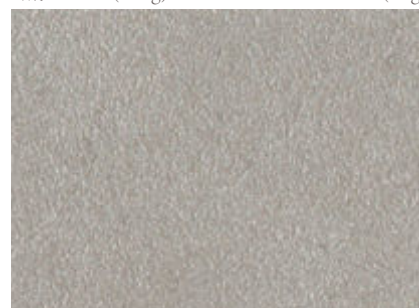
S底+M74 (200g) XY - M74(100g)



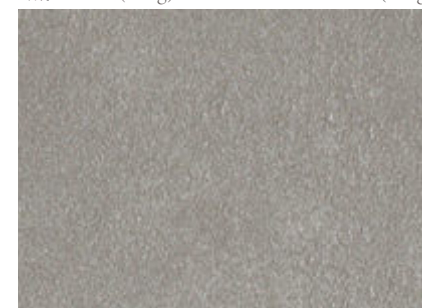
S底+M16 (10g) XY - M16 (5g)



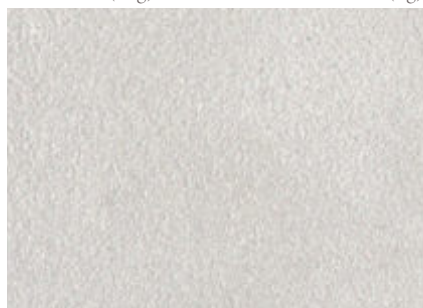
S底+M16 (50g) XY - M16 (25g)



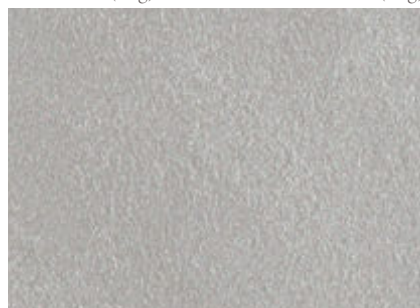
S底+M16 (100g) XY - M16 (50g)



S底+M16 (200g) XY - M16 (100g)



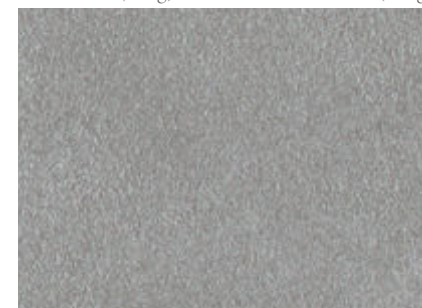
S底+M66 (10g) XY - M66 (5g)



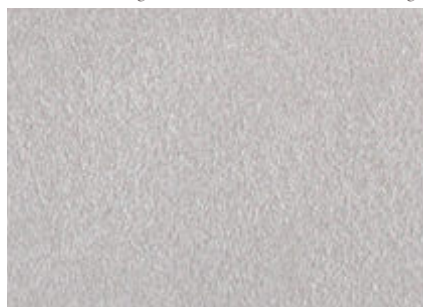
S底+M66 (50g) XY - M66 (25g)



S底+M66 (100g) XY - M66 (50g)



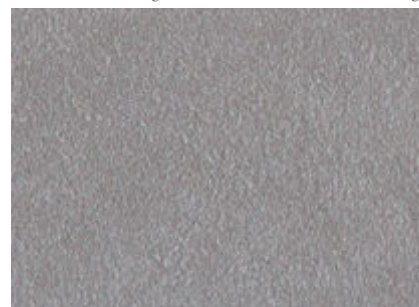
S底+M66 (200g) XY - M66 (100g)



S底+M72 (10g) XY - M72 (5g)



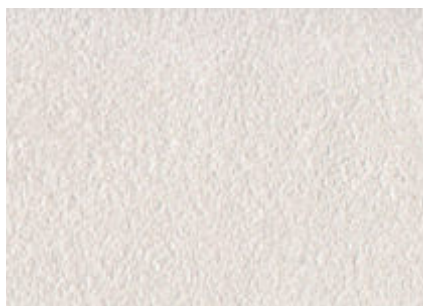
S底+M72 (50g) XY - M72 (25g)



S底+M72 (100g) XY - M72 (50g)



S底+M72 (200g) XY - M72 (100g)



S底+M05 (10g) XY - M05 (5g)



S底+M05 (50g) XY - M05 (25g)



S底+M05 (100g) XY - M05 (50g)



S底+M05 (200g) XY - M05 (100g)



S底+M07 (10g) XY - M07 (5g)



S底+M07 (50g) XY - M07 (25g)



S底+M07 (100g) XY - M07 (50g)



S底+M07 (200g) XY - M07 (100g)



S底+M29 (10g) XY - M29 (5g)



S底+M29 (50g) XY - M29 (25g)



S底+M29 (100g) XY - M29 (50g)



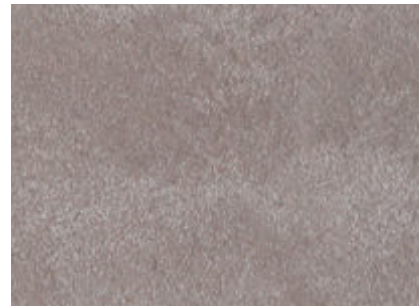
S底+M29 (200g) XY - M29 (100g)



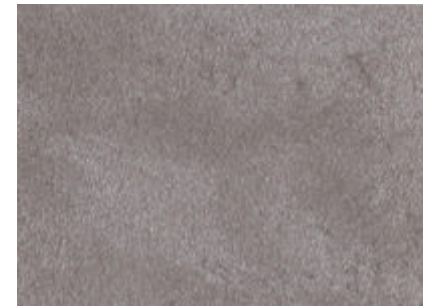
S底+M107 (10g) XY - M107 (5g)



S底+M107 (50g) XY - M107 (25g)



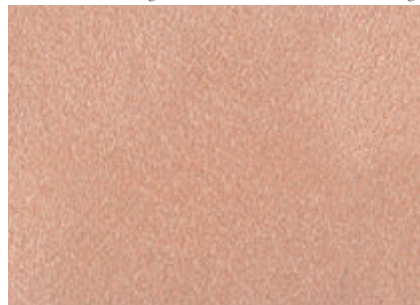
S底+M107 (100g) XY - M107 (50g)



S底+M107 (200g) XY - M107 (100g)



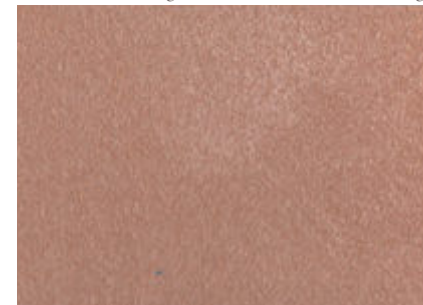
S底+M97 (10g) XY - M97 (5g)



S底+M97 (50g) XY - M97 (25g)



S底+M97 (100g) XY - M97 (50g)



S底+M97 (200g) XY - M97 (100g)



S底+M36 (10g) XY - M36 (5g)



S底+M36 (50g) XY - M36 (25g)



S底+M36 (100g) XY - M36 (50g)



S底+M36 (200g) XY - M36 (100g)



S底+M96 (10g) XY - M96 (5g)



S底+M96 (50g) XY - M96 (25g)



S底+M96 (100g) XY - M96 (50g)



S底+M96 (200g) XY - M96 (100g)



S底+M75 (10g) XY - M75 (5g)



S底+M75 (50g) XY - M75 (25g)



S底+M75 (100g) XY - M75 (50g)



S底+M75 (200g) XY - M75 (100g)



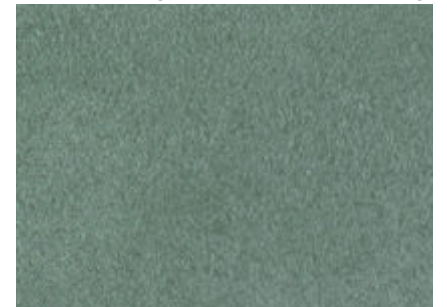
S底+M112 (10g) XY - M112 (5g)



S底+M112 (50g) XY - M112 (25g)



S底+M112 (100g) XY - M112 (50g)



S底+M112 (200g) XY - M112 (100g)



S底+6231 (10g) XY - 6231 (5g)



S底+6231 (50g) XY - 6231 (25g)



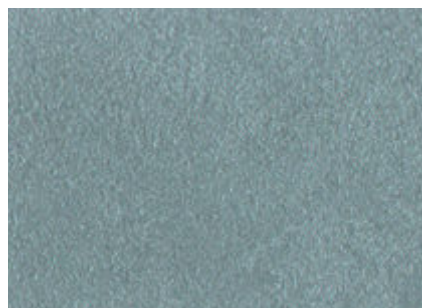
S底+6231 (100g) XY - 6231 (50g)



S底+6231 (200g) XY - 6231 (100g)



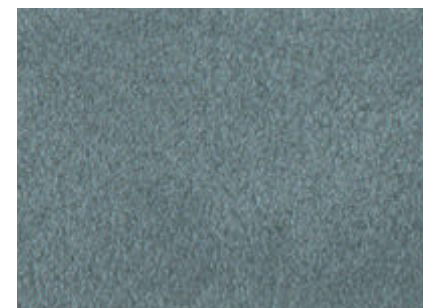
S底+M42 (10g) XY - M42 (5g)



S底+M42 (50g) XY - M42 (25g)



S底+M42 (100g) XY - M42 (50g)



S底+M42 (200g) XY - M42 (100g)



S底+M81 (10g) XY - M81 (5g)



S底+M81 (50g) XY - M81 (25g)



S底+M81 (100g) XY - M81 (50g)



S底+M81 (200g) XY - M81 (100g)



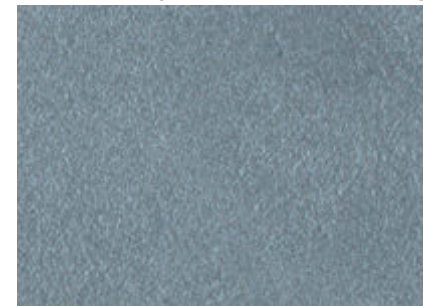
S底+M51 (10g) XY - M51 (5g)



S底+M51 (50g) XY - M51 (25g)



S底+M51 (100g) XY - M51 (50g)



S底+M51 (200g) XY - M51 (100g)



S底+M23 (10g) XY - M23 (5g)



S底+M23 (50g) XY - M23 (25g)



S底+M23 (100g) XY - M23 (50g)



S底+M23 (200g) XY - M23 (100g)



S底+M104 (10g) XY - M104 (5g)



S底+M104 (50g) XY - M104 (25g)



S底+M104 (100g) XY - M104 (50g)



S底+M104 (200g) XY - M104 (100g)



S底+M100 (10g) XY - M100 (5g)



S底+M100 (50g) XY - M100 (25g)



S底+M100 (100g) XY - M100 (50g)



S底+M100 (200g) XY - M100 (100g)



S底+M50 (10g) XY - M50 (5g)



S底+M50 (50g) XY - M50 (25g)



S底+M50 (100g) XY - M50 (50g)



S底+M50 (200g) XY - M50 (100g)



S底+M87 (10g) XY - M87 (5g)



S底+M87 (50g) XY - M87 (25g)



S底+M87 (100g) XY - M87 (50g)



S底+M87 (200g) XY - M87 (100g)



S底+6226 (10g) XY - 6226 (5g)



S底+6226 (50g) XY - 6226 (25g)



S底+6226 (100g) XY - 6226 (50g)



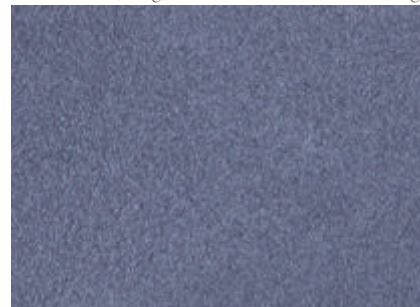
S底+6226 (200g) XY - 6226 (100g)



S底+6227 (10g) XY - 6227 (5g)



S底+6227 (50g) XY - 6227 (25g)



S底+6227 (100g) XY - 6227 (50g)



S底+6227 (200g) XY - 6227 (100g)



Artpainting

|

Tonality

|

Style

Pickme Art Coating Co.,Ltd