



Pick me

# STELLAR WHISPER

The Handmade Art Paint

白 辰 微 光

Pick Me  
Paint

以微光點亮空間  
賦予牆面靜謐而高雅的氛圍

# 白辰 微光

/ Stellar Whisper

以微光點亮空間  
賦予牆面靜謐而高雅的氛圍



# 白辰 · 微光

## 關於產品 / About the product

白辰微光配備有密度更高、更集中的珠光粉末,並根據光線的折射改變外觀,有助於提升空間的整體亮度

Changing the appearance based on the refraction of light helps to enhance the overall brightness of the space

## 適用範圍 / Scope of Application

高級的歐式宴會廳/酒店大堂/典雅別墅/奢華的精品店等

High-end European-style banquet halls/hotel lobbies/elegant villas/luxury boutiques, etc.

## 參考用量 / Reference Dosage

批塗：2.5m<sup>2</sup>/kg/2遍  
刷塗：4.5m<sup>2</sup>/kg/2遍

Paint: 2.5m<sup>2</sup>/kg/2 times  
Brush: 4.5m<sup>2</sup>/kg/2 times

## 產品淨重 / Net Weight

2.5kg/桶/barrel

## 配套工具 / Companion Tools

羊毛滾筒/毛刷/批刀

Wool Roller/Brush/Batch Cutter



靈活施工

Flexible Construction

可刷可抹  
實現多樣紋理效果

Can be brushed or wiped to realize a variety of texture effects.



內斂奢華

Introverted luxury

柔和霧面質感  
帶來高雅氛圍

Soft matte texture for an elegant ambience



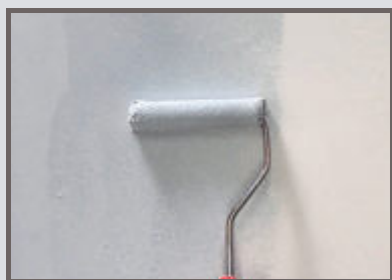
高硬度耐用

High hardness

鍛燒型高嶺土工藝  
耐擦洗耐用

Forged kaolin geotextile, scrub resistant and durable

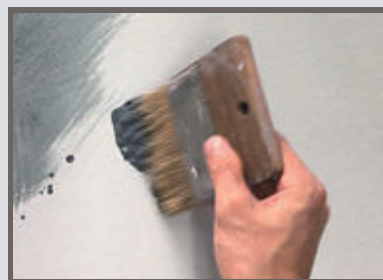
## 施工工藝 / Construction Process



### 01. / 第一步

滾塗同色抗鹼細砂底漆（可添加25%水）兩遍，均勻覆蓋即可

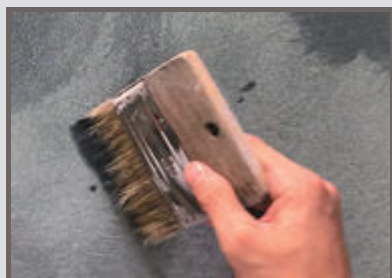
Roll on two coats of the same color granular primer (25% water can be added) and cover evenly.



### 02. / 第二步

塗刷主材（可添加25%-30%水）1遍，待半乾時，輕收掃除明顯毛刷痕跡

Brush the main material (25%-30% water can be added) once, and when half dry, gently sweep away obvious brush marks.



### 03. / 第三步

塗刷主材（可添加25%-30%水）第2遍，待半乾時，輕收掃除明顯毛刷痕跡

Sweep the main material (25%-30% water can be added) for a second time, and when half dry, gently sweep away any obvious brush marks.



### 04. / 第四步

滾塗抗刮單面（可添加15%-20%水）1遍，均勻覆蓋即可

Roll and apply anti-scratch cover (15%-20% water may be added) 1 time and cover evenly.

# 白辰 微光

/ Stellar Whisper

以微光點亮空間  
賦予牆面靜謐而高雅的氛圍

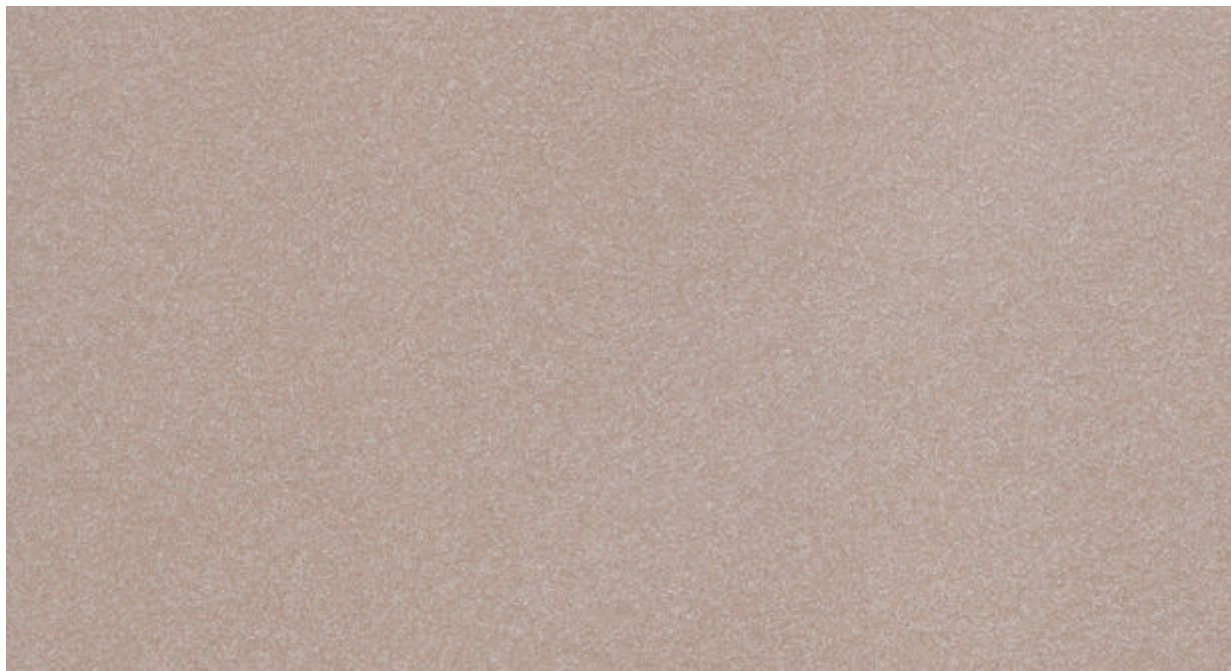
# 白辰 · 微光



S底 + M107 (30g)

BC - M107 (15g)

批塗 / Paint

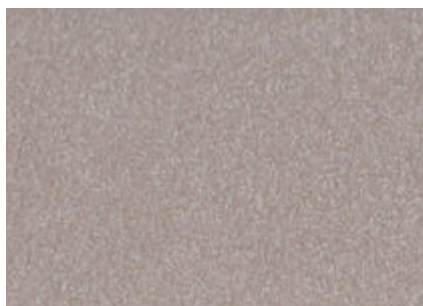


S底 + M107 (30g)

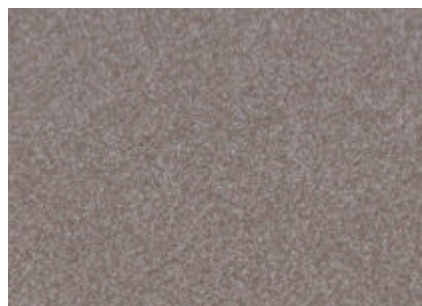
BC - M107 (15g)

刷塗 / Brush





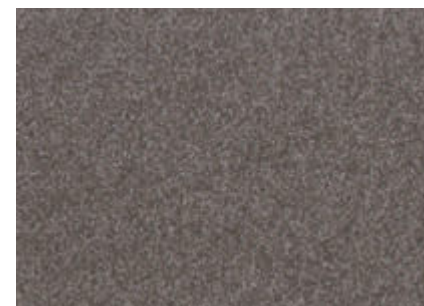
S底+M40 (10g) BC - M40 (5g)



S底+M40 (30g) BC - M40 (15g)



S底+M40 (60g) BC - M40 (30g)



S底+M40 (100g) BC - M40 (50g)



S底+M80 (10g) BC - M80 (5g)



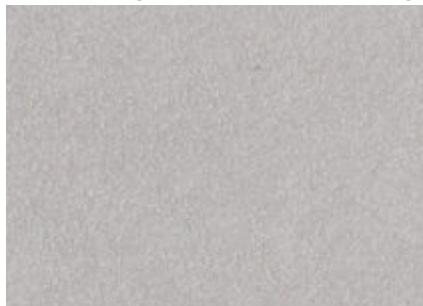
S底+M80 (30g) BC - M80 (15g)



S底+M80 (60g) BC - M80 (30g)



S底+M80 (100g) BC - M80 (50g)



S底+M83 (10g) BC - M83 (5g)



S底+M83 (30g) BC - M83 (15g)



S底+M83 (60g) BC - M83 (30g)



S底+M83 (100g) BC - M83 (50g)



S底+M89 (10g) BC - M89 (5g)



S底+M89 (30g) BC - M89 (15g)



S底+M89 (60g) BC - M89 (30g)



S底+M89 (100g) BC - M89 (50g)



S底+M103 (10g) BC - M103 (5g)



S底+M103 (30g) BC - M103 (15g)



S底+M103 (60g) BC - M103 (30g)

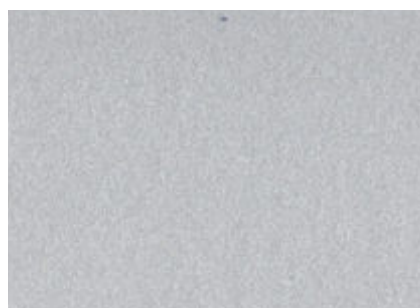


S底+M103 (100g) BC - M103 (50g)



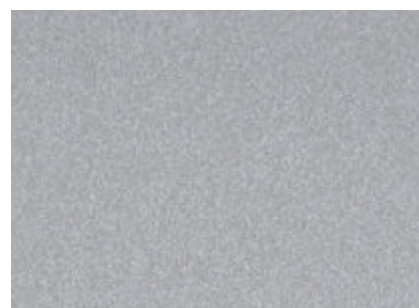
S底 +M77 (10g)

BC - M77 (5g)



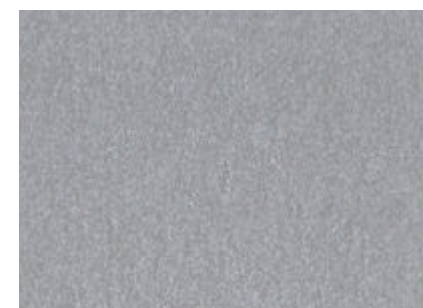
S底 +M77 (30g)

BC - M77 (15g)



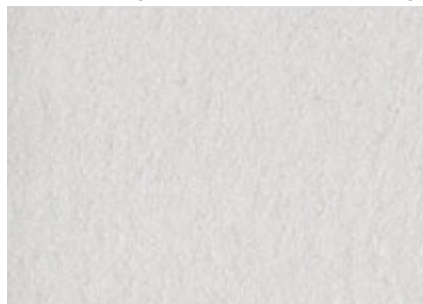
S底 +M77 (60g)

BC - M77 (30g)



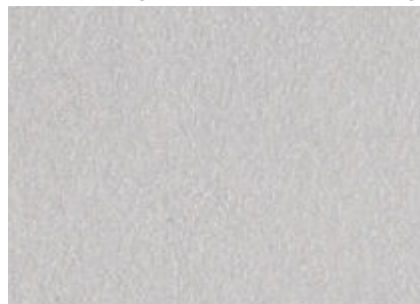
S底 +M77 (100g)

BC - M77 (50g)



S底 +M74 (10g)

BC - M74 (5g)



S底 +M74 (30g)

BC - M74 (15g)



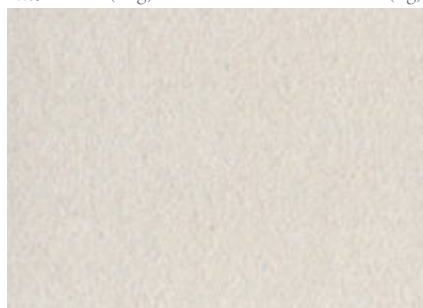
S底 +M74 (60g)

BC - M74 (30g)



S底 +M74 (100g)

BC - M74 (50g)



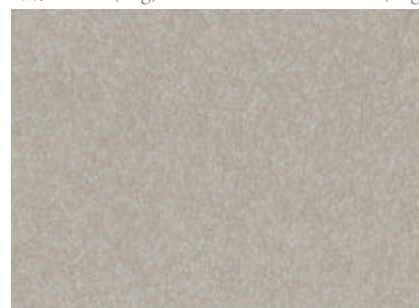
S底 +M16 (10g)

BC - M16 (5g)



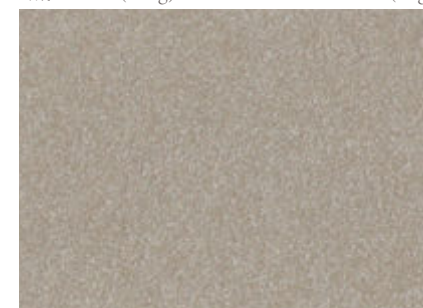
S底 +M16 (30g)

BC - M16 (15g)



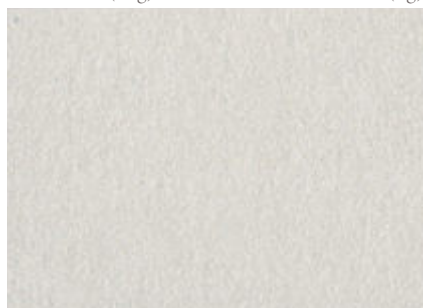
S底 +M16 (60g)

BC - M16 (30g)



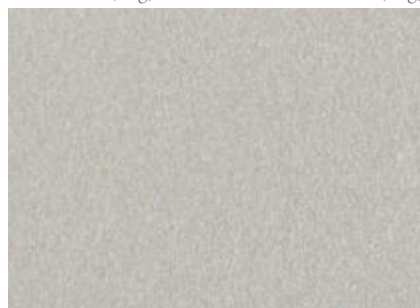
S底 +M16 (100g)

BC - M16 (50g)



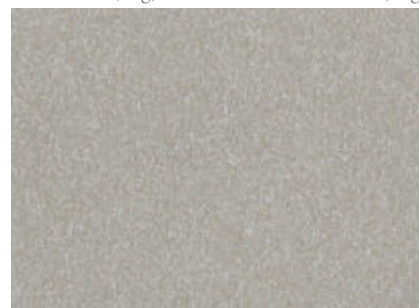
S底 +M66 (10g)

BC - M66 (5g)



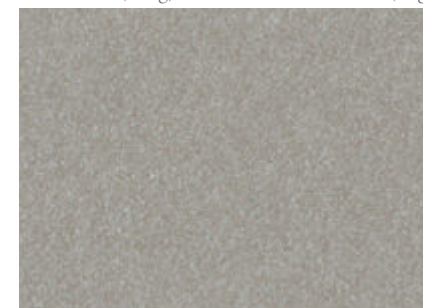
S底 +M66 (30g)

BC - M66 (15g)



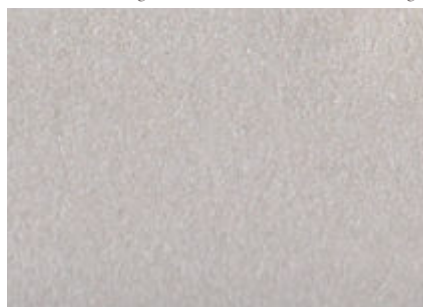
S底 +M66 (60g)

BC - M66 (30g)



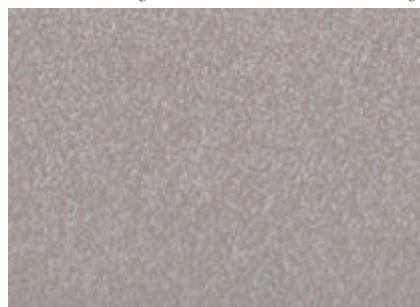
S底 +M66 (100g)

BC - M66 (50g)



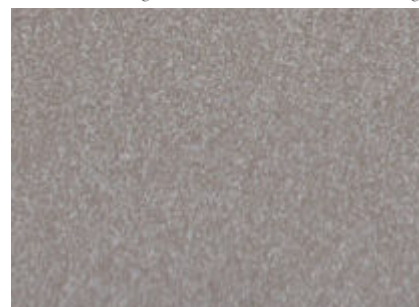
S底 +M72 (10g)

BC - M72 (5g)



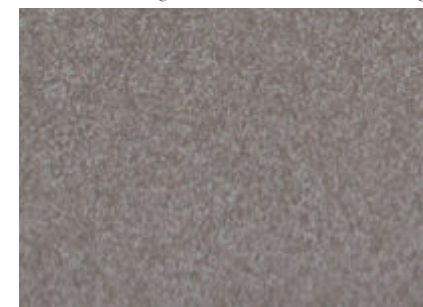
S底 +M72 (30g)

BC - M72 (15g)



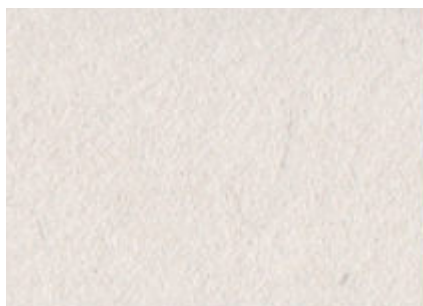
S底 +M72 (60g)

BC - M72 (30g)



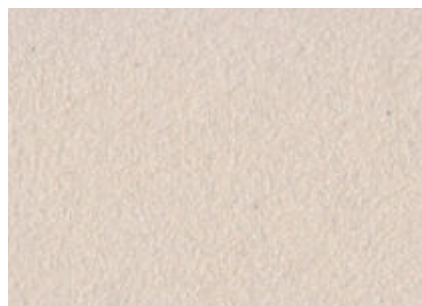
S底 +M72 (100g)

BC - M72 (50g)



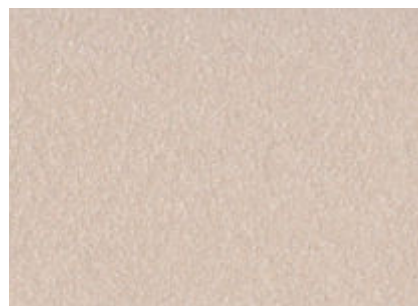
S底+M05 (10g)

BC - M05 (5g)



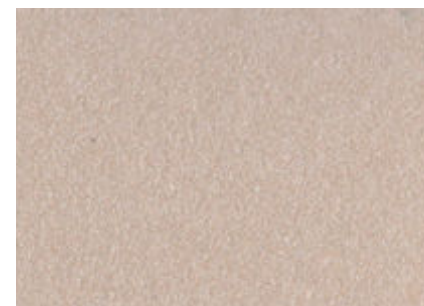
S底+M05 (30g)

BC - M05 (15g)



S底+M05 (60g)

BC - M05 (30g)



S底+M05 (100g)

BC - M05 (50g)



S底+M07 (10g)

BC - M07 (5g)



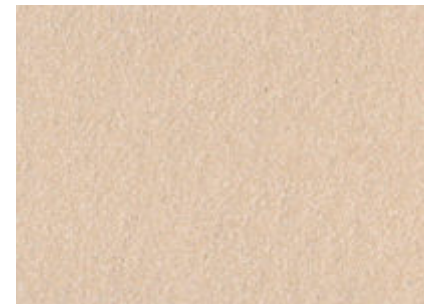
S底+M07 (30g)

BC - M07 (15g)



S底+M07 (60g)

BC - M07 (30g)



S底+M07 (100g)

BC - M07 (50g)



S底+M29 (10g)

BC - M29 (5g)



S底+M29 (30g)

BC - M29 (15g)



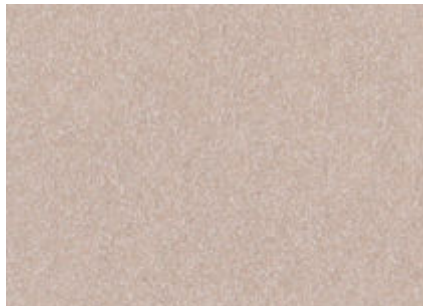
S底+M29 (60g)

BC - M29 (30g)



S底+M29 (100g)

BC - M29 (50g)



S底+M107 (10g)

BC - M107 (5g)



S底+M107 (30g)

BC - M107 (15g)



S底+M107 (60g)

BC - M107 (30g)



S底+M107 (100g)

BC - M107 (50g)



S底+M97 (10g)

BC - M97 (5g)



S底+M97 (30g)

BC - M97 (15g)



S底+M97 (60g)

BC - M97 (30g)



S底+M97 (100g)

BC - M97 (50g)



S底+M36 (10g) BC-M36 (5g)



S底+M36 (30g) BC-M36 (15g)



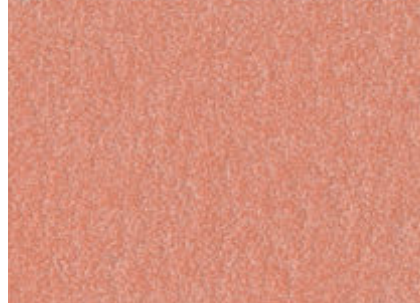
S底+M36 (60g) BC-M36 (30g)



S底+M36 (100g) BC-M36 (50g)



S底+M96 (10g) BC-M96 (5g)



S底+M96 (30g) BC-M96 (15g)



S底+M96 (60g) BC-M96 (30g)



S底+M96 (100g) BC-M96 (50g)



S底+M75 (10g) BC-M75 (5g)



S底+M75 (30g) BC-M75 (15g)



S底+M75 (60g) BC-M75 (30g)



S底+M75 (100g) BC-M75 (50g)



S底+M112 (10g) BC-M112 (5g)



S底+M112 (30g) BC-M112 (15g)



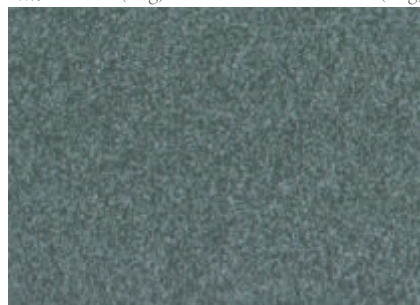
S底+M112 (60g) BC-M112 (30g)



S底+M112 (100g) BC-M112 (50g)



S底+6231 (10g) BC-6231 (5g)



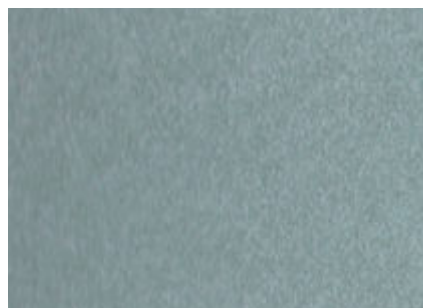
S底+6231 (30g) BC-6231 (15g)



S底+6231 (60g) BC-6231 (30g)



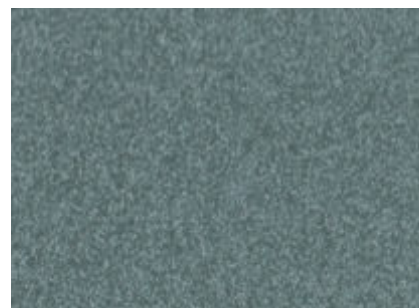
S底+6231 (100g) BC-6231 (50g)



S底+M42 (10g) BC - M42 (5g)



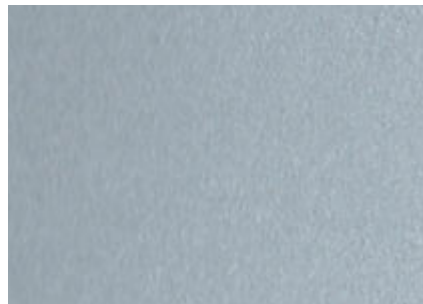
S底+M42 (30g) BC - M42 (15g)



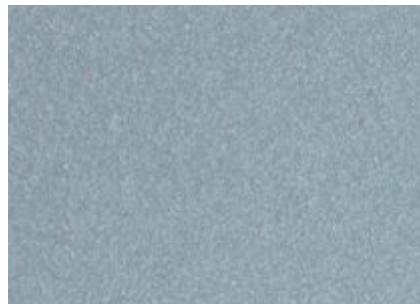
S底+M42 (60g) BC - M42 (30g)



S底+M42 (100g) BC - M42 (50g)



S底+M81 (10g) BC - M81 (5g)



S底+M81 (30g) BC - M81 (15g)



S底+M81 (60g) BC - M81 (30g)



S底+M81 (100g) BC - M81 (50g)



S底+M51 (10g) BC - M51 (5g)



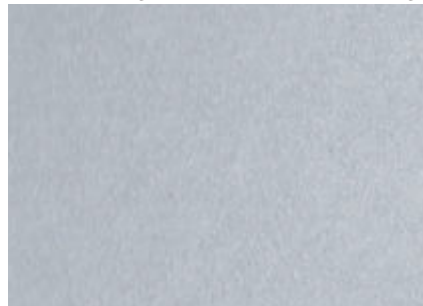
S底+M51 (30g) BC - M51 (15g)



S底+M51 (60g) BC - M51 (30g)



S底+M51 (100g) BC - M51 (50g)



S底+M23 (10g) BC - M23 (5g)



S底+M23 (30g) BC - M23 (15g)



S底+M23 (60g) BC - M23 (30g)



S底+M23 (100g) BC - M23 (50g)



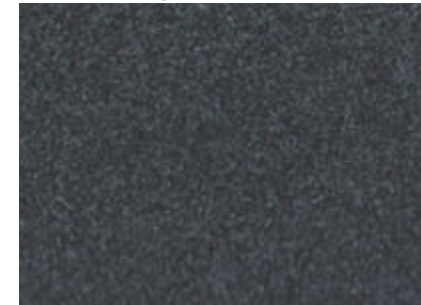
S底+M104 (10g) BC - M104 (5g)



S底+M104 (30g) BC - M104 (15g)



S底+M104 (60g) BC - M104 (30g)



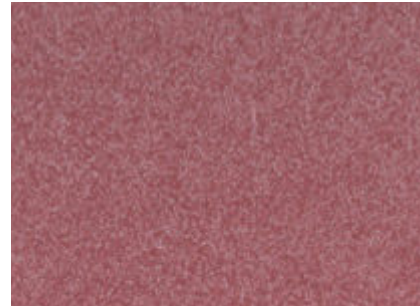
S底+M104 (100g) BC - M104 (50g)



S底+M100 (10g) BC - M100 (5g)



S底+M100 (30g) BC - M100 (15g)



S底+M100 (60g) BC - M100 (30g)



S底+M100 (100g) BC - M100 (50g)



S底+M50 (10g) BC - M50 (5g)



S底+M50 (30g) BC - M50 (15g)



S底+M50 (60g) BC - M50 (30g)



S底+M50 (100g) BC - M50 (50g)



S底+M87 (10g) BC - M87 (5g)



S底+M87 (30g) BC - M87 (15g)



S底+M87 (60g) BC - M87 (30g)



S底+M87 (100g) BC - M87 (50g)



S底+6226 (10g) BC - 6226 (5g)



S底+6226 (30g) BC - 6226 (15g)



S底+6226 (60g) BC - 6226 (30g)



S底+6226 (100g) BC - 6226 (50g)



S底+6227 (10g) BC - 6227 (5g)



S底+6227 (30g) BC - 6227 (15g)



S底+6227 (60g) BC - 6227 (30g)



S底+6227 (100g) BC - 6227 (50g)



Artpainting | Tonality | Style

Pickme Art Coating Co.,Ltd